



VATECH ASSURANCE

VATECH IMAGING SYSTEMS

**vatech**

# PaX-i Plus™



## **5.0 LP/MM PANO IMAGE QUALITY**

- Optimal image for accurate diagnosis

## **RAPID CEPH**

- 1.9 second acquisition time produces superb image quality
- Reduced motion artifacts and faster workflow

## **USER\_FRIENDLY EZDENT\_I SOFTWARE**

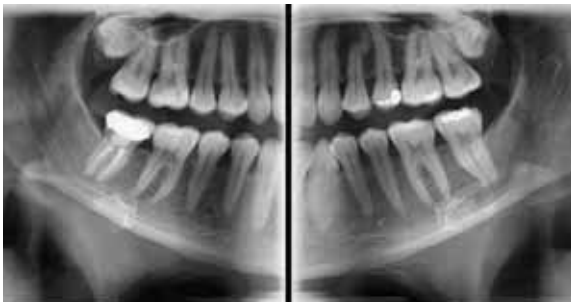
- Powerful diagnostic value with Insight feature
- Complete solution for consultation
- Easy to learn, easy to use

## THE ADVANCED IMAGING SOLUTION FOR ACCURATE DENTAL DIAGNOSIS

The PaX-i Plus provides the most precise and high quality panoramic images by combining image processing and accumulated experience in dental imaging from Vatech. This will increase your diagnostic accuracy for improved treatment planning and patient satisfaction.



## MAKE YOUR DIAGNOSIS EASY AND EFFICIENT WITH VARIOUS CAPTURE MODES



Bitewing Mode



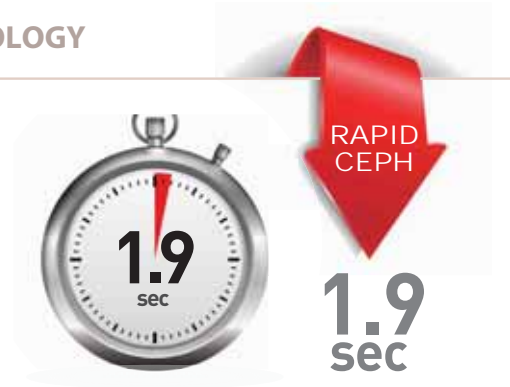
TMJ Mode

SELECTION	ARCH	EXAMINATION MODE
PANO EXAMINATION	Narrow / Normal Wide / Child	Standard / Right / Front / Left
	Orthogonal	Orthogonal Standard / Right / Front / Left Bitewing Standard / Right / Front / Left
SPECIAL EXAMINATION	Normal	TMJ LAT Open / Close TMJ PA Open / Close Sinus LAT / PA

# MINIMIZE MOTION ARTIFACTS WITH RAPID CEPH TECHNOLOGY

The next step in cephalometric technology, Vatech's new Rapid Ceph minimizes motion artifacts and enables faster diagnostic workflow while providing the highest quality digital images.

## GREAT CLINICAL CARE WITH RAPID CEPH TECHNOLOGY



### PRODUCT CONFIGURATION

	PANO	CEPH
PaX-i Plus	•	–
PaX-i Plus RC	•	•

### SPECIFICATIONS (PaX-i Plus : PCH-30CS)

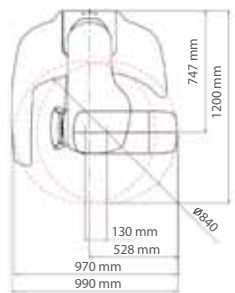
Function		Pano + Ceph	
Focal Spot		0.5 mm (IEC60336)	
Scan Time	Pano	Normal	10.4 sec
		HD	14 sec
	Ceph	1.9 / 3.9 sec	
Gray Scale		14 bit	
Tube Voltage / Current		60 ~ 99 kV / 4 ~ 10 mA	

Weight	Without Ceph unit	95 kg (209.4 lbs. – without Base)
		135 kg (297.6 lbs. – with Base)
Weight	With Ceph unit	120 kg (264.5 lbs. – without Base)
		160 kg (352.7 lbs. – with Base)
Dimensions	Without Ceph unit	990 mm (L) x 1200 mm (W) x 2300 mm (H)
	With Ceph unit	1930 mm (L) x 1200 mm (W) x 2300 mm (H)

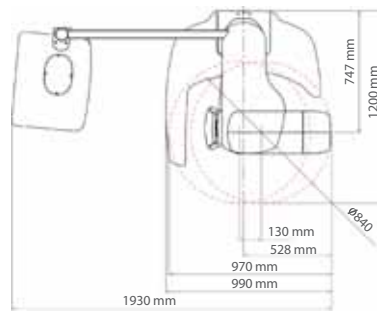
\* The specifications are subject to change without prior notice.

### DIMENSIONS [Unit: mm]

TOP VIEW

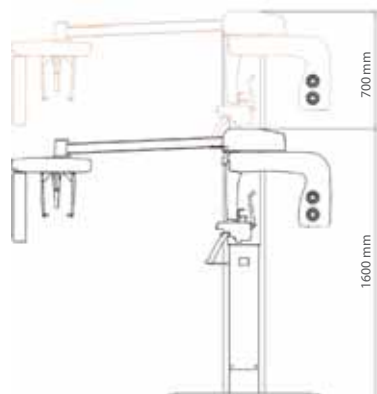
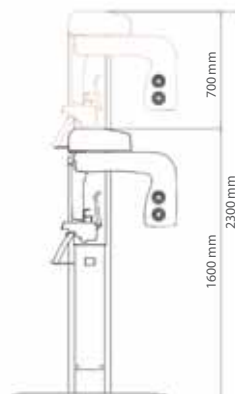


Without CEPH unit



With CEPH unit

FRONT VIEW



# PROFESSIONAL DIAGNOSTIC VALUE WITH CEPHALOMETRIC IMAGES

EXTENDED DIAGNOSTIC VALUE FOR WIDE INSIGHT

## CEPHALOMETRIC (SCAN TYPE)

The PaX-i3D provides optimal images with an exclusively designed sensor for cephalometric diagnosis. As it offers two image sizes, LAT and Full LAT, you can choose one of them based on your diagnostic needs.

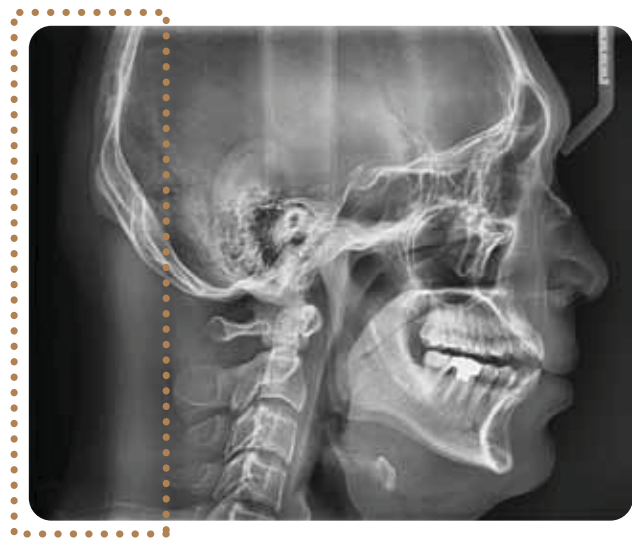
### Built-in Sensor System

The PaX-i3D enables you to acquire high quality images in a safe and comfortable environment. You don't need to waste time or risk damage by changing sensors.



LATERAL

Provide specialized high quality images to suit orthodontics and maxillofacial surgeries.



FULL LATERAL

Full lateral image size is 30% wider and shows the occipital area of the patient, which enables comprehensive diagnosis.

EXAMINATION PROGRAM	SCAN TIME	IMAGE SIZE
LATERAL	12.9 sec	21X23 cm (8.3"X9.1")
FULL LATERAL	16.9 sec	25X23 cm (9.8"X9.1")



**ONE SHOT CEPH**

With One Shot Ceph, you can acquire high quality images with low X-ray dosage. Plus, short scan time reduces distortion caused by patient movement.

**CEPHALOMETRIC (ONE SHOT TYPE)**

The PaX-i3D provides up to three different image sizes in LAT and PA modes reducing unnecessary X-ray dose for patients, making your diagnosis look more professional.

**SMALL** 20X20 cm (8"X8")



**MEDIUM** 23X25 cm (9"X10")



**LARGE** 30X25 cm (12"X10")



OP (One Shot Premium) →

**PA**



**Carpus**



**SMV(Submentovertex)**





**vatech**

Vatech Europe | [info@vatecheurope.com](mailto:info@vatecheurope.com) | 01/2019



[www.vatecheurope.com](http://www.vatecheurope.com)